

44 Albert St, Whitchurch-Stouffville, ON

PREPARED FOR:  
Will Wilkinson  
Sales Representative  
RE/MAX Hallmark Realty Ltd., Brokerage

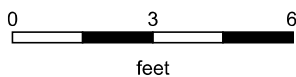
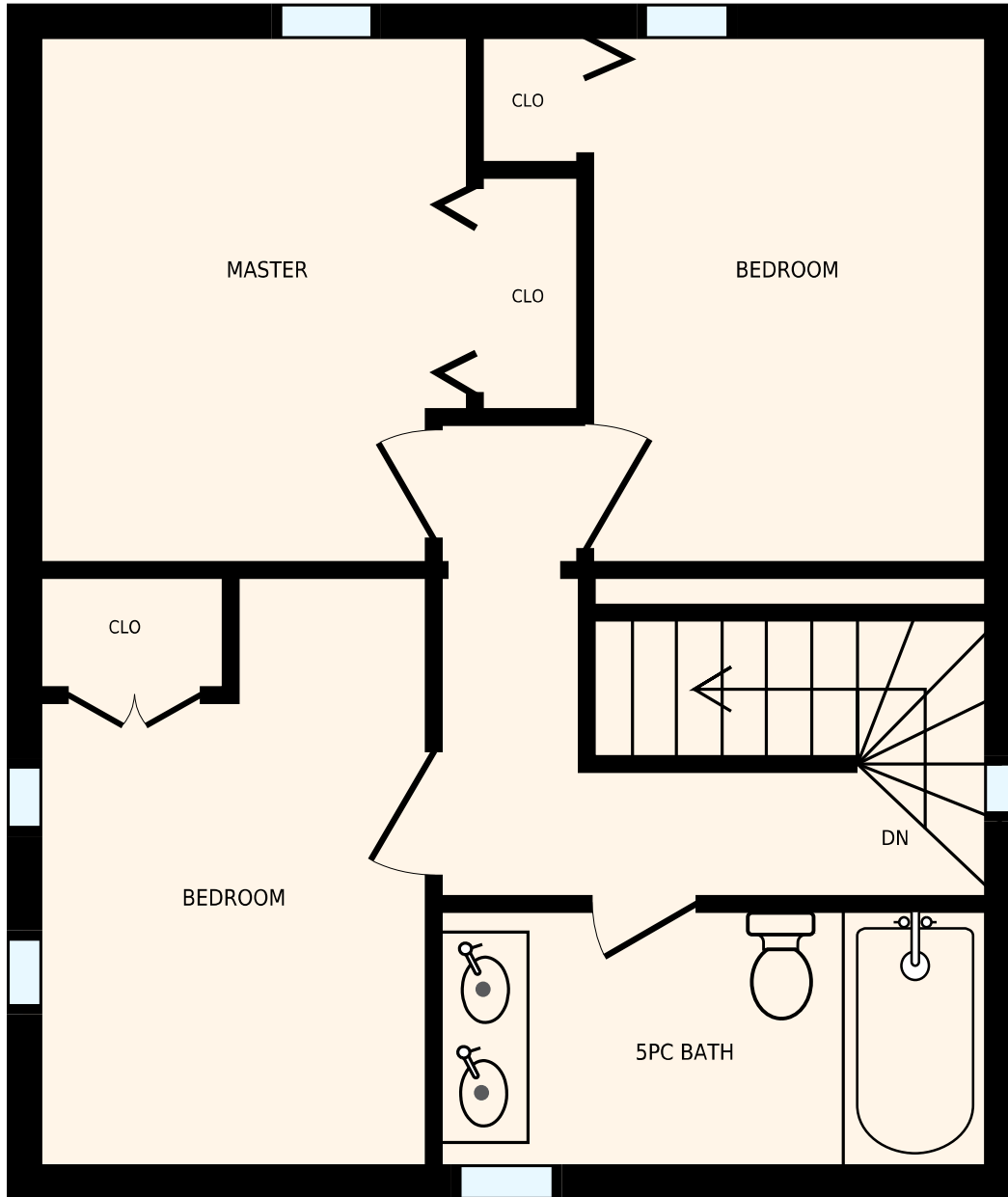
Main floor

Interior Area  
Floor Area

900 sq. ft  
1010 sq. ft

PREPARED ON:  
May, 2016

All rooms dimensions and floor areas must be considered approximate and are subject to independent verification. For method of measurement please see <http://youriguide.com/measure/>.



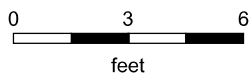
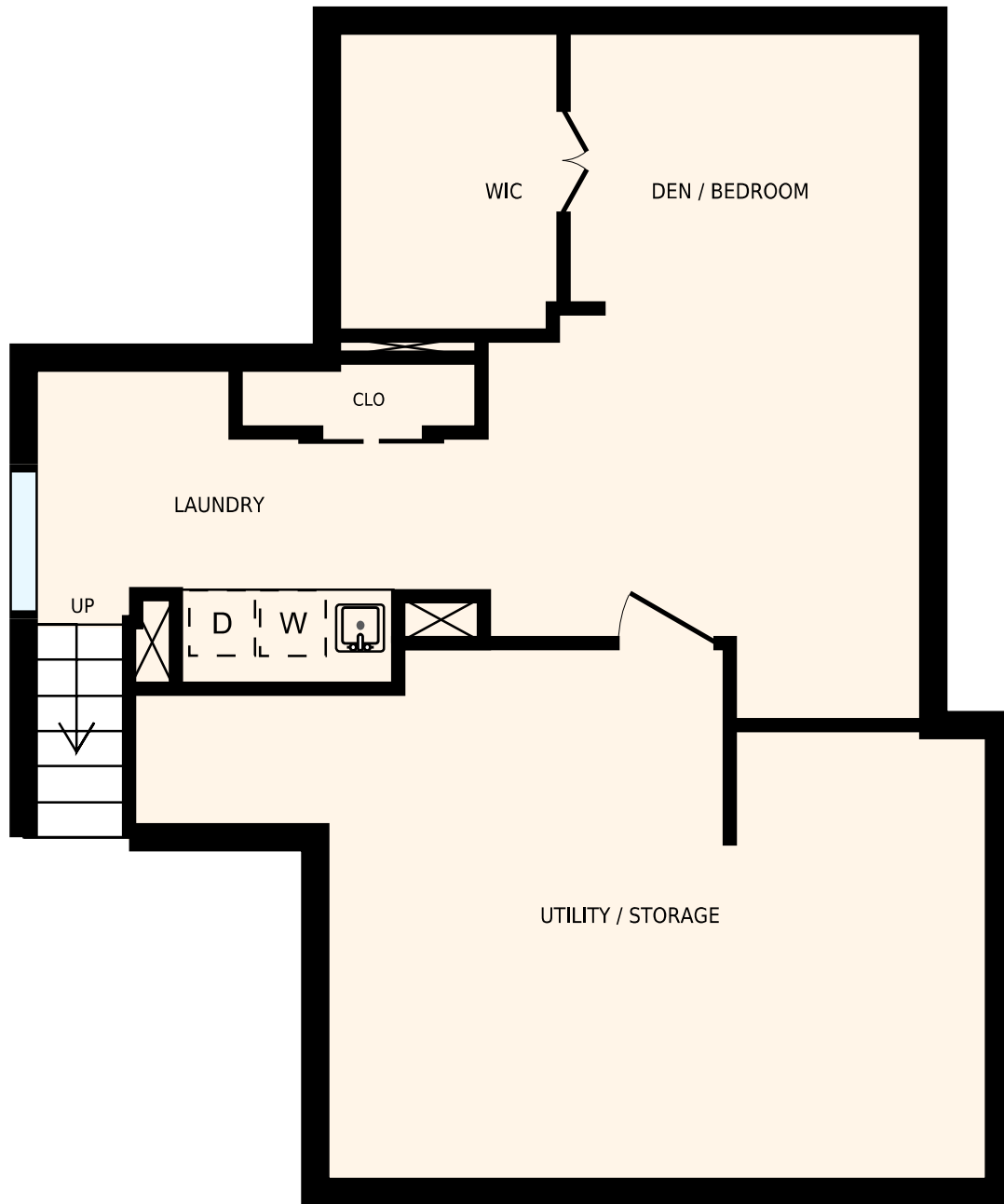
44 Albert St, Whitchurch-Stouffville, ON  
2nd floor

PREPARED FOR:  
Will Wilkinson  
Sales Representative  
RE/MAX Hallmark Realty Ltd., Brokerage

Interior Area	550 sq. ft	
Floor Area	630 sq. ft	

PREPARED ON:  
May, 2016

All rooms dimensions and floor areas must be considered approximate and are subject to independent verification. For method of measurement please see <http://youriguide.com/measure/>.



44 Albert St, Whitchurch-Stouffville, ON  
Basement

PREPARED FOR:  
Will Wilkinson  
Sales Representative  
RE/MAX Hallmark Realty Ltd., Brokerage

Interior Area  
Floor Area

670 sq. ft

PREPARED ON:  
May, 2016

All rooms dimensions and floor areas must be considered approximate and are subject to independent verification. For method of measurement please see <http://youriguide.com/measure/>.